

2W Series Solenoid Valve



Ordering Code 2W (UD) 2/2 Port Solenoid Valve (Small Orifice)

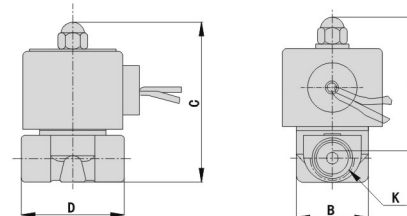
2 W	0 2 5	-	0 8	-	F	-	D	-	□	A C 1 1 0 V
Type Code	Orifice		Joint Size		Mounting Type		Coil Type		Control Type	Standard voltage
2W:2/2 Solenoid Valve 2WH:2/2 Solenoid Valve (High Pressure)	012:1.2mm 020:2mm 025:2.5mm 040:4mm		06:G1/8" 08:G1/4" 10:G3/8"		Blank:Tube Joint Type F:With Flange		Blank:DIN Type I:Flyingleads E:Anti-explosion coil G:Anti-water coil		Blank:Normal Close T:Normal Open	DC12V DC24V AC24V 50/60HZ AC110V 50/60HZ AC220V 50/60HZ AC380V 50/60HZ

Marks:Just 2W040 available for normal open

Specifications

Model	2W025-06	2W025-08	2W040-10	2WH012-06	2WH012-08	2WH020-10
Working Medium	Air, Water, Oil, Gas					
Acting Type	Direction					
Condition	Normal Closed					
Orifice	2.5	4		1.2		2
CV Value	0.23		0.60	0.05		0.15
Joint Size	G1/8"	G1/4"	G 3/8"	G1/8"	G1/4"	G3/8"
Working Pressure	Air, Water, Oil, Gas:0~0.7Mpa			Air, Water, Oil:0~2.0Mpa		
Max Pressure	1.0Mpa			3.5Mpa		
Working Temperature	-5~80°C					
Body Material	Brass					
Seals	NBR, EPDM, VITON					

Main Specification 2W Series Small Orifice



Model	A	B	C	D	K
2W025-06	66	30.3	75.0	40.5	ZG1/8
2W025-08	66	30.3	75.0	40.5	ZG1/4
2W025-10	74	32.2	85.5	52.5	ZG3/8
2WH012-06	66	30.3	75.0	40.5	ZG3/8
2WH012-08	66	30.3	75.0	40.5	ZG1/2
2WH020-10	74	32.2	85.5	52.5	ZG3/4



2W Series Solenoid Valve



Ordering Code 2W Series 2 Position 2 Port Direction valve (Big Orifice)

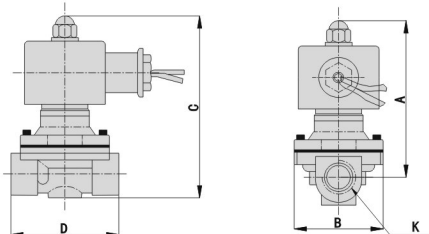
2 W	1 6 0	-	1 5	-	F	-	D	-	□	AC 1 1 0 V
Type Code 2W:2 Position 2 Port Directional valve	Orifice 160:16mm 200:20mm 250:25mm 300:30mm 350:35mm 400:40mm 500:50mm	Joint Size 10:G3/8" 15:G1/2" 20:G3/4" 25:G1" 35:G1 1/4" 40:G1 1/2" 50:G2"	Mounting Type Blank:Tube Joint Type F:With Flange	Coil Type Blank:DIN Type I:Flyingleads E:Anti-explosion coil G:Anti-water coil	Control Type Blank:Normal Close T:Normal Open	Standard Voltage DC12V DC24V AC24V 50/60HZ AC110V 50/60HZ AC220V 50/60HZ AC380V 50/60HZ				

Marks:Just 2W160、2W200、2W250 Normal open Available

Specifications

Model	2W160-10	2W160-15	2W200-20	2W250-25	2W350-35	2W400-40	2W500-50
Working medium	Air、Water、Oil、Gas						
Acting type	Direct Acting						
Type	Normal Closed/Normal Open						
Orifice	16		20	25	35	40	50
CV value	4.8		7.6	12	24	29	48
Joint Size	G3/8"	G1/2"	G 3/4"	G1"	G1 1/4"	G1 1/2"	G2"
Working pressure	Aire: 0~0.7Mpa ; water: 0~0.5Mpa ; Oil: 0~0.5Mpa ; Gas: 0~0.7Mpa						
Max Pressure	1.05Mpa						
Working Temperature	-5~80℃						
Body material	Brass						
Seals	NBR、VITON						

Main Specifications 2W Series Big Orifice



Model	A	B	C	D	K
2W160-10	101.5	57.0	117	69	3/8"
2W160-15	101.5	57.0	117	69	1/2"
2W200-20	107.0	57.0	123.5	73	3/4"
2W250-25	111.5	73.5	134.5	99	1"
2W350-35	142.0	95.0	172	123	1 1/4"
2W400-40	142.0	95.0	172	123	1 1/2"
2W500-50	172	123	209	168	2"

2L Series Solenoid Valve

Ordering Code 2L Series 2 Position 2 Port Solenoid Valve

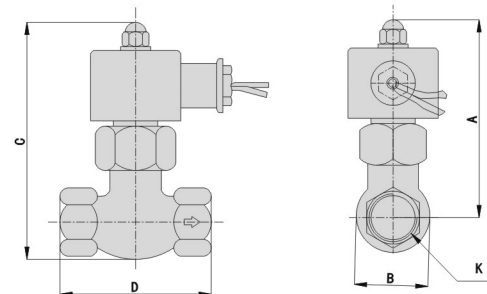
2 L	1 7 0	-	1 5	-	AC 1 1 0 V
Type Code US:Steam Valve 2 Position 2 Port valve	Orifice 170:17mm 200:22mm 300:30mm 500:50mm	Joint Size 10:G3/8" 15:G1/2" 20:G3/4" 25:G1" 35:G1-1/4" 40:G1-1/2" 50:G2"	Standard Voltage DC12V DC24V AC24V AC36V AC110V AC220V AC380V		



Specifications

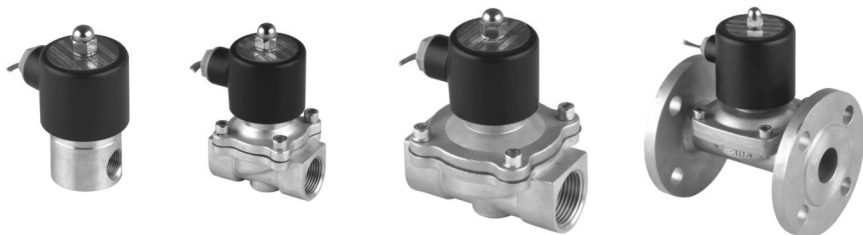
Model	2L-10	2L-15	2L-20	2L-25	2L-35	2L-40	2L-50
Working Medium	Air、Water、Oil						
Acting Type	Pilot Type						
Type	Normal Closed						
Orifice	17mm			22mm	30mm		50mm
CV Value	4.8			12	20		48
Joint Size	G3/8"	G1/2"	G3/4"	G1"	G1-1/4"	G1-1/2"	G2"
Working Pressure	0.1~1.5Mpa						
Max Pressure	2.25Mpa						
Working Temperature	-5~180℃						
Working Pressure Range	±10%						
Body Material	Brass						
Seals	PTFE						

Main Specifications



Model	A	B	C	D	K
2L170-10	125	42.0	146	82	3/8"
2L170-15	125	42.0	146	82	1/2"
2L170-20	125	42.0	146	82	3/4"
2L200-25	136	52.0	162	90.5	1"
2L300-35	148	74.0	185	111	1 1/4"
2L300-40	148	74.0	183	111	1 1/2"
2L500-50	176	94.5	223	163	2"

2S Series Solenoid Valve



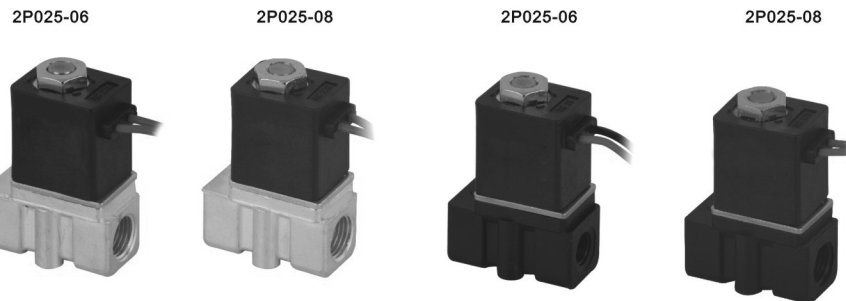
Ordering Code 2S Series 2 Position 2 Port Direction Solenoid Valve

2 S	1 6 0	- 1 5	- F	- D	AC 1 1 0 V
Type Code 2S:2 Position 2 Port Direction Solenoid valve	Orifice 025:2.5mm 040:4.0mm 160:16mm 200:20mm 250:25mm 350:35mm 400:40mm 500:50mm	Joint Size 06:G1/8" 08:G1/4" 10:G3/8" 15:G1/2" 20:G3/4" 25:G1" 30:G1 1/4" 40:G1 1/2" 50:G2"	Mounting Type Blank:Tube Joint Type F:With Flange	Coil Type Blank:DIN Type I:Flying leads E:Anti-explosion coil G:Anti-water coil	Standard Voltage DC12V DC24V AC24V 50/60HZ AC110V 50/60HZ AC220V 50/60HZ AC380V 50/60HZ

Specifications

Model	2S025-06	2S025-08	2S040-10	2S160-10	2S160-15	2S200-20	2S250-25	2S350-35	2S400-40	2S500-50
Working Medium	Air, Water, Oil, Gas									
Acting Type	Direct Acting									
Type	Normal Close									
Orifice	2.5	4	16	20	25	35	40	50		
CV Value	0.23	0.60	4.8	7.6	12	24	29	48		
Joint Size	G 1/8"	G 1/4"	G 3/8"	G 3/8"	G 1/2"	G 3/4"	G 1"	G 1 1/4"	G 1 1/2"	2"
Working Pressure	0-0.7Mpa									
Max Pressure	1.05Mpa									
Working Temperature	-5~80°C									
Working Pressure Range	±10%									
Body Material	Stainless steel									
Seals	NBR, EPDM, VITON									

2P Series Solenoid Valve



Brass Valve Body

Plastic Valve Body

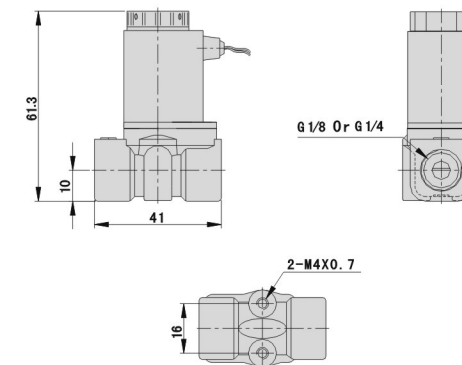
Ordering Code 2P Series 2 Position 2 Port Solenoid Valve

2 P	0 2 5	- 0 6	- □	- AC 1 1 0 V
Type Code 2P:2 Position 2 Port Solenoid valve	Orifice 025:2.5mm	Joint Size	B:Brass P:Plastic	Standard Voltage DC12V DC24V AC24V 50HZ/60HZ AC110V 50HZ/60HZ AC220V 50HZ/60HZ AC380V 50HZ/60HZ

Specifications

Model	2P025-06	2P025-08
Working Medium	Air, Water, Oil, Gas	
Acting Type	Direct Acting	
Type	Normal Close	
Orifice	2.5mm	
CV Value	0.23	
Joint Size	G 1/8"	G 1/4"
Working Pressure	0-0.7Mpa	
Max Pressure	1.0Mpa	
Working Temperature	-5~80°C	
Working Voltage Range	±10%	
Body Material	Engineering Plastic	
Seals	NBR, EPDM, VITON	

Main Specifications



2V Series Solenoid Valve

Ordering Code 2V Series 2 Position 2 Port Solenoid Valve

2V 025 - 06 - AC110V

Type Code
2V: 2 Position 2 Port Solenoid valve

Orifice
025: 2.5mm
130: 13mm
250: 25mm

Joint Size
06: G1/8"
08: G1/4"
10: G3/8"
15: G1/2"
20: G3/4"
25: G1"

Standard voltage
DC12V
DC24V
AC24V 50HZ/60HZ
AC110V 50HZ/60HZ
AC220V 50HZ/60HZ
AC380V 50HZ/60HZ

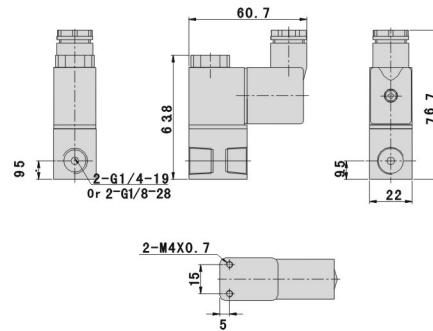


Specifications

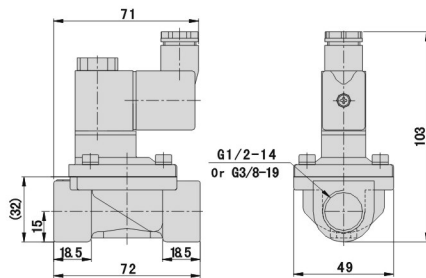
Model	2V025-08	2V130-15	2V250-25
Working Medium	Air, Water, Oil		
Acting Type	Direct Acting	Guide Type	
Type	Normal Close		
Orifice	2.5mm	13mm	25mm
CV Value	0.23	6.2	23
Joint Size	G1/4"	G1/2"	G1"
Working Pressure	0-0.8Mpa	0.05-0.7Mpa	
Max Pressure	1.2Mpa	1.05Mpa	
Working Temperature	-5~80°C		
Working Pressure Range	±10%		
Body Material	Aluminum, Brass	Brass	
Seals	NBR, VITON	NBR	

Main Specifications

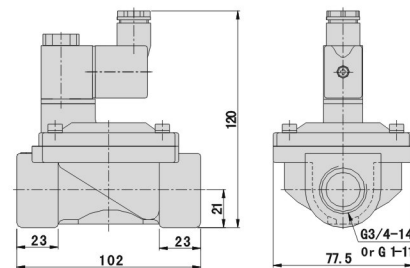
2V025



2V130



2V250



VX Series Solenoid Valve

Ordering Code VX Series Solenoid Valve

VX2120 - 08 - AC110V

Type Code

Joint Size
06: G1/8"
08: G1/4"
10: G3/8"
15: G1/2"

Standard Voltage
DC12V
DC24V
AC24V 50HZ/60HZ
AC110V 50HZ/60HZ
AC220V 50HZ/60HZ
AC380V 50HZ/60HZ

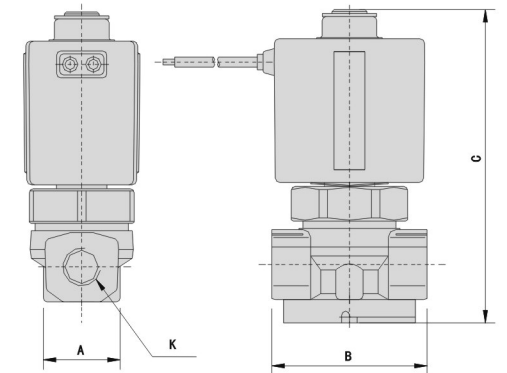


Specifications VX Series Solenoid Valve(2 Position 2 Port)

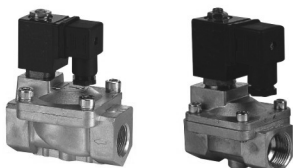
Model	VX2120-06	VX2120-08	VX2120-10	VX2130-15
Working Medium	Air, Water, Steam			
Acting Type	Direct Acting			
Type	Normal Closed			
Working Pressure	0~1.0Mpa			
Orifice	3mm		13mm	
Joint Size	G1/8"	G1/4"	G3/8"	G1/2"
Working Pressure Range	-5~150°C		-5~80°C	
Seals	VITON		NBR	

Main Specifications

Model	K	A	B	C
VX2120-06	G1/8"	25	40	64
VX2120-08	G1/4"	25	40	64
VX2120-10	G3/8"	48	68	110
VX2120-15	G1/2"	48	68	110



SLP/SLP-S Series

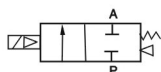


Products Features:

- * Normal close, available body: brass, SS316
- * Multiple seals are available for different medium
- * Wide size range from 1/8" to 2" , with both thread and flange connection
- * Diaphragm pilot solenoid valve, with lower working pressure

SLP

SLP-S

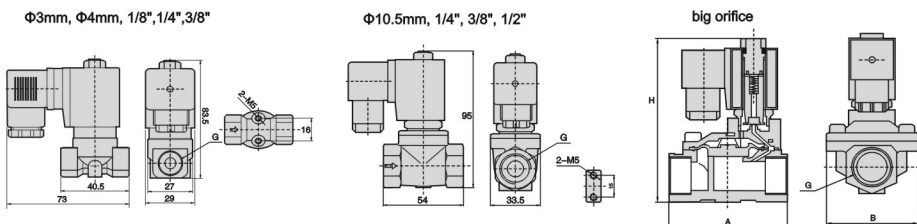


Ordering Code SLP/SLP-S Series

SLP - 06 - □ - 3L - S - H					
SLP Series	Port Size	Seal material	Orifice(mm)	Valve Body	Control Style
	06:G1/8" 08:G1/4" 10:G3/8" 15:G1/2" 20:G3/4" 25:G1" 35:G1-1/4" 40:G1-1/2" 50:G2" F:Flange	Blank: NBR V: VITON E: EPDM	1L: 1.0 1.5L: 1.5 2.5L: 2.5 3L: 3.0 4L: 4.0 5L: 5.0 6L: 6.0 10L: 10.0 10.5L: 10.5 13L: 13.0 20L: 20.0 25L: 25.0 35L: 35.0 40L: 40.0 50L: 50.0	Blank: Brass S:SS316	Blank: Normal Close H:Normal Open
			Cancel If Same With Port Size		

* SLP series, 2 port, 2 position, 1/8" port size, NBR Seal, AC110V, Orifice: 3mm,Brass valve body, normal close, model: SLP06E1-3L
* SLP series, 2 port, 2 position, 3/8" port size, VITON Seal, AC220V, Orifice: 13mm,SS316 valve body, normal open, model: SLP10VE2-13LS1H

Main Specifications



Specifications

Port Size (G)	Orifice	CV Value	Pressure Difference(Bar)						Max. Temperature	Power		220VAC	50/60Hz	Main Dimension	
			Max. working pressure				AC 220	W 24V							
			Min.	Air, Gas	Water, Hot water, Liquid	Light oil ≤20CST	VA	W		Brass	Stainless Steel			Length x Width x Height	AxBxH(mm)
1/8"	3	0.23	0	13	13	10	80	22	13	SLP06-3L	SLP06-3LS1				
	3	0.23	0	13	13	—	130	22	13	SLP06E-3L	SLP06E-3LS1				
	3	0.23	0	13	13	10	120	22	13	SLP06V-3L	SLP06V-3LS1				
1/4"	3	0.23	0	13	13	10	80	22	13	SLP08-3L	SLP08-3LS1				
	3	0.23	0	13	13	—	130	22	13	SLP08E-3L	SLP08E-3LS1				
	3	0.23	0	13	13	10	120	22	13	SLP08V-3L	SLP08V-3LS1				
	10.5	1.47	0	10	10	10	80	22	13	SLP08-10.5L	—				
	10.5	1.47	0	10	10	—	130	22	13	SLP08E-10.5L	—				
	10.5	1.47	0	10	10	10	120	22	13	SLP08V-10.5L	—				
3/8"	3	0.3	0	13	13	10	80	22	13	SLP10-3L	SLP10-3LS1				
	3	0.3	0	13	13	10	130	22	13	SLP10E-3L	SLP10E-3LS1				
	3	0.3	0	13	13	10	120	22	13	SLP10V-3L	SLP10V-3L				
	4	0.6	0	8	8	6	80	22	13	SLP10-4L	SLP10-4LS1				
	4	0.6	0	8	8	6	130	22	13	SLP10E-4L	SLP10E-4LS1				
	4	0.6	0	8	8	6	120	22	13	SLP10V-4L	SLP10V-4LS1				
	10.5	1.68	0	10	10	10	80	22	13	SLP10V-10.5L	—				
	10.5	1.68	0	10	10	—	130	22	13	SLP10E-10.5L	—				
	10.5	1.68	0	10	10	10	120	22	13	SLP10V-10.5L	—				
	13	4.5	0.5	16	16	13	80	22	13	SLP10V-13L	SLP10V-13LS1	86 x 48 x 112			
	13	4.5	0.5	16	16	—	130	22	13	SLP10E-13L	SLP10E-13LS1	86 x 48 x 112			
	13	4.5	0.5	16	16	13	120	22	13	SLP10V-13L	SLP10V-13LS1	86 x 48 x 112			
1/2"	10.5	1.75	0	10	10	10	80	22	13	SLP15-10.5L	—				
	10.5	1.75	0	10	10	—	130	22	13	SLP15E-10.5L	—				
	10.5	1.75	0	10	10	10	120	22	13	SLP15V-10.5L	—				
	13	4.5	0.5	16	16	13	80	22	13	SLP15-13L	SLP15-13LS1	86 x 48 x 112			
	13	4.5	0.5	16	16	—	130	22	13	SLP15E-13L	SLP15E-13LS1	86 x 48 x 112			
	13	4.5	0.5	16	16	13	120	22	13	SLP15V-13L	SLP15V-13LS1	86 x 48 x 112			
3/4"	20	7.6	0.5	16	16	13	80	22	13	SLP-20	SLP-20S1	75 x 58 x 118			
	20	7.6	0.5	16	16	—	130	22	13	SLP-20E	SLP-20ES1	75 x 58 x 118			
	20	7.6	0.5	16	16	13	120	22	13	SLP-20V	SLP-20VS1	75 x 58 x 118			
1"	25	12	0.5	16	16	13	80	22	13	SLP-25	SLP-25S1	96 x 70 x 131			
	25	12	0.5	16	16	—	130	22	13	SLP-25E	SLP-25ES1	96 x 70 x 131			
	25	12	0.5	16	16	13	120	22	13	SLP-25V	SLP-25VS1	96 x 70 x 131			
1-1/4"	35	22	0.5	16	16	13	80	22	13	SLP-35	SLP-35S1	131 x 96 x 146			
	35	22	0.5	16	16	—	130	22	13	SLP-35E	SLP-35ES1	131 x 96 x 146			
	35	22	0.5	16	16	13	120	22	13	SLP-35V	SLP-35VS1	131 x 96 x 146			
1-1/2"	40	30	0.5	16	16	13	80	22	13	SLP-40	SLP-40S1	131 x 96 x 146			
	40	30	0.5	16	16	—	130	22	13	SLP-40E	SLP-40ES1	131 x 96 x 146			
	40	30	0.5	16	16	13	120	22	13	SLP-40V	SLP-40VS1	131 x 96 x 146			
2"	50	48	0.5	16	16	13	80	22	13	SLP-50	SLP-50S1	165 x 120 x 167			
	50	48	0.5	16	16	—	130	22	13	SLP-50E	SLP-50ES1	165 x 120 x 167			
	50	48	0.5	16	16	13	120	22	13	SLP-50V	SLP-50VS1	165 x 120 x 167			
Flange connection	25	12	0.5	16	16	13	80	22	13	—	SLPF-25LS1	134 x 110 x 160			
	25	12	0.5	16	16	—	130	22	13	—	SLPFE-25LS1	134 x 110 x 160			
	25	12	0.5	16	16	13	120	22	13	—	SLPFV-25LS1	134 x 110 x 160			
Flange connection	35	22	0.5	16	16	13	80	22	13	—	SLPF-35LS1	160 x 135 x 175			
	35	22	0.5	16	16	—	130	22	13	—	SLPFE-35LS1	160 x 135 x 175			
	35	22	0.5	16	16	13	120	22	13	—	SLPFV-35LS1	160 x 135 x 175			
Flange connection	40	30	0.5	16	16	13	80	22	13	—	SLPF-40LS1	160 x 145 x 180			
	40	30	0.5	16	16	—	130	22	13	—	SLPFE-40LS1	160 x 145 x 180			
	40	30	0.5	16	16	13	120	22	13	—	SLPFV-40LS1	160 x 145 x 180			
Flange connection	50	48	0.5	16	16	13	80	22	13	—	SLPF-50LS1	200 x 160 x 207			
	50	48	0.5	16	16	—	130	22	13	—	SLPFE-50LS1	200 x 160 x 207			
	50	48	0.5	16	16	13	120	22	13	—	SLPFV-50LS1	200 x 160 x 207			

SLP-H/SLPS-H Series



SLP - H Small Orifice



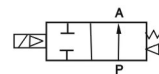
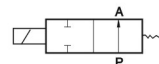
SLP-H



SLPS-H Small Orifice



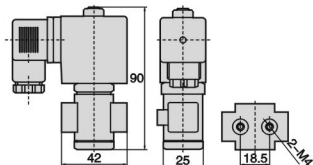
SLPS-H



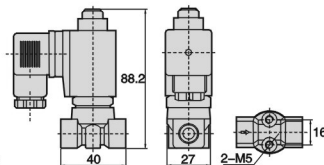
- * Normal open, available body: brass, SS316
- * Multiple seals are available for different medium
- * Wide size range from 1/8" to 2" , with both thread and flange connection
- * Diaphragm pilot solenoid valve, with lower working pressure

Main Specifications

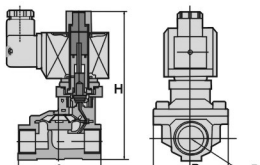
Φ1-Φ2.5mm 1/8" 1/4"



Φ3-Φ3mm, 1/8", 1/4"



big orifice



Specifications

Port Size (G)	Orifice (mm)	CV Value	Pressure Difference(Bar)					Power		Model		Main Dimension	
			Max. working pressure					AC 220	DC 24V	220VAC			Length x Width x Height AxBxH(mm)
			Min. Pressure	Air, Gas	Water, Hot water, Liquid	Light oil $\leq 20\text{CST}$	Max. Temperature ($^{\circ}\text{C}$)			Brass	Stainless Steel		
1/8"	1	0.04	0	30	30	25	80	22	13	SLP06-1LS1H	SLP06-1LH		
	1	0.04	0	30	30	-	130	22	13	SLP06E-1S1LH	SLP06E-1LH		
	1	0.04	0	30	30	25	120	22	13	SLP06V-1LS1H	SLP06V-1LH		
	1.5	0.09	0	20	20	15	80	22	13	SLP06-1.5LS1H	SLP06-1.5LH		
	1.5	0.09	0	20	20	-	130	22	13	SLP06E-1.5LS1H	SLP06E-1.5LH		
	1.5	0.09	0	20	20	15	120	22	13	SLP06V-1.5LS1H	SLP06V-1.5LH		
	2.5	0.2	0	15	15	12	80	22	13	SLP06-2.5LS1H	SLP06-2.5LH		
	2.5	0.2	0	15	15	-	130	22	13	SLP06E-2.5LS1H	SLP06E-2.5LH		
	2.5	0.2	0	15	15	12	120	22	13	SLP06V-2.5LS1H	SLP06V-2.5LH		
	3	0.25	0	12	12	10	80	22	13	SLP06-3LS1H	SLP06-3LH		
	3	0.25	0	12	12	-	130	22	13	SLP06E-3LS1H	SLP06E-3LH		
	3	0.25	0	12	12	10	120	22	13	SLP06V-3LS1H	SLP06V-3LH		

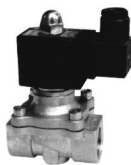
Specifications

Port Size (G)	Orifice (mm)	Value	Pressure Difference(Bar)					Max. Temperature ($^{\circ}\text{C}$)	Power		Model		Main Dimension	
			Max. Working Pressure						AC 220	DC 24V	220VAC			Length x Width x Height AxBxH(mm)
			Min. Pressure	Air, Gas	Water, Hot water, Liquid	Light oil $\leq 20\text{CST}$	Brass				Stainless Steel			
1/4"	1	0.04	0	30	30	25	80	22	13	SLP08-1LH	SLP08-1LS1LH			
	1	0.04	0	30	30	-	130	22	13	SLP08E-1LH	SLP08E-1LS1H			
	1	0.04	0	30	30	25	120	22	13	SLP08V-1LH	SLP08V-1LS1H			
	1.5	0.09	0	20	20	15	80	22	13	SLP08-1.5LH	SLP08-1.5LS1H			
	1.5	0.09	0	20	20	-	130	22	13	SLP08E-1.5LH	SLP08E-1.5LS1H			
	1.5	0.09	0	20	20	15	120	22	13	SLP08V-1.5LH	SLP08V-1.5LS1H			
	2.5	0.2	0	15	15	12	80	22	13	SLP08-2.5LH	SLP08-2.5LS1H			
	2.5	0.2	0	15	15	-	130	22	13	SLP08E-2.5LH	SLP08E-2.5LS1H			
	2.5	0.2	0	15	15	12	120	22	13	SLP08V-2.5LH	SLP08V-2.5LS1H			
	3	0.25	0	12	12	10	80	22	13	SLP08-3LH	SLP08-3LS1H			
	3	0.25	0	12	12	-	130	22	13	SLP08E-3LH	SLP08E-3LS1H			
	3	0.25	0	12	12	10	120	22	13	SLP08V-3LH	SLP08V-3LS1H			
3/8"	13	4.5	0.5	8	8	7	80	33	32	SLP10-13LH	SLP10-13LS1H	66 x 48 x 124		
	13	4.5	0.5	8	8	-	120	33	32	SLP10E-13LH	SLP10E-13LS1H	66 x 48 x 124		
	13	4.5	0.5	8	8	7	120	33	32	SLP10V-13LH	SLP10V-13LS1H	66 x 48 x 124		
1/2"	13	4.5	0.5	8	8	7	80	33	32	SLP15-13LH	SLP15-13LS1H	66 x 48 x 124		
	13	4.5	0.5	8	8	-	120	33	32	SLP15E-13LH	SLP15E-13LS1H	66 x 48 x 124		
	13	4.5	0.5	8	8	7	120	33	32	SLP15V-13LH	SLP15V-13LS1H	66 x 48 x 124		
3/4"	20	7.6	0.5	8	8	7	80	33	32	SLP-20H	SLP-20S1H	75 x 58 x 130		
	20	7.6	0.5	8	8	-	120	33	32	SLP-20EH	SLP-20ES1H	75 x 58 x 130		
	20	7.6	0.5	8	8	7	120	33	32	SLP-20VH	SLP-20VS1H	75 x 58 x 130		
1"	25	12	0.5	8	8	7	80	33	32	SLP-25H	SLP-25S1H	96 x 70 x 143		
	25	12	0.5	8	8	-	120	33	32	SLP-25EH	SLP-25ES1H	96 x 70 x 143		
	25	12	0.5	8	8	7	120	33	32	SLP-25VH	SLP-25VS1H	96 x 70 x 143		
1-1/4"	35	22	0.5	8	8	7	80	33	32	SLP-35H	SLP-35S1H	131 x 96 x 158		
	35	22	0.5	8	8	-	120	33	32	SLP-35EH	SLP-35ES1H	131 x 96 x 158		
	35	22	0.5	8	8	7	120	33	32	SLP-35VH	SLP-35VS1H	131 x 96 x 158		
1-1/2"	40	30	0.5	8	8	7	80	33	32	SLP-40H	SLP-40S1H	131 x 96 x 158		
	40	30	0.5	8	8	-	120	33	32	SLP-40EH	SLP-40ES1H	131 x 96 x 158		
	40	30	0.5	8	8	7	120	33	32	SLP-40VH	SLP-40VS1H	131 x 96 x 158		
2"	50	48	0.5	8	8	7	80	33	32	SLP-50H	SLP-50S1H	165 x 120 x 179		
	50	48	0.5	8	8	-	120	33	32	SLP-50EH	SLP-50ES1H	165 x 120 x 179		
	50	48	0.5	8	8	7	120	33	32	SLP-50VH	SLP-50VS1H	165 x 120 x 179		
Flange connection	25	12	0.5	8	8	7	80	33	32	-	SLP-25LS1H	134 x 110 x 172		
	25	12	0.5	8	8	-	120	33	32	-	SLPEF-25LS1H	134 x 110 x 172		
	25	12	0.5	8	8	7	120	33	32	-	SLPFV-25LS1H	134 x 110 x 172		
Flange connection	35	22	0.5	8	8	7	80	33	32	-	SLP-35LS1H	160 x 135 x 187		
	35	22	0.5	8	8	-	120	33	32	-	SLPEF-35LS1H	160 x 135 x 187		
	35	22	0.5	8	8	7	120	33	32	-	SLPFV-35LS1H	160 x 135 x 187		
Flange connection	40	30	0.5	8	8	7	80	33	32	-	SLP-40LS1H	160 x 145 x 192		
	40	30	0.5	8	8	-	120	33	32	-	SLPEF-40LS1H	160 x 145 x 192		
	40	30	0.5	8	8	7	120	33	32	-	SLPFV-40LS1H	160 x 145 x 192		
Flange connection	50	48	0.5	8	8	7	80	33	32	-	SLP-50LS1H	200 x 160 x 219		
	50	48	0.5	8	8	-	120	33	32	-	SLPEF-50LS1H	200 x 160 x 219		
	50	48	0.5	8	8	7	120	33	32	-	SLPFV-50LS1H	200 x 160 x 219		

ZS Series 2/2 Solenoid Valve (Normal Close)



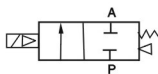
ZS



ZS-S2



ZSF-S2



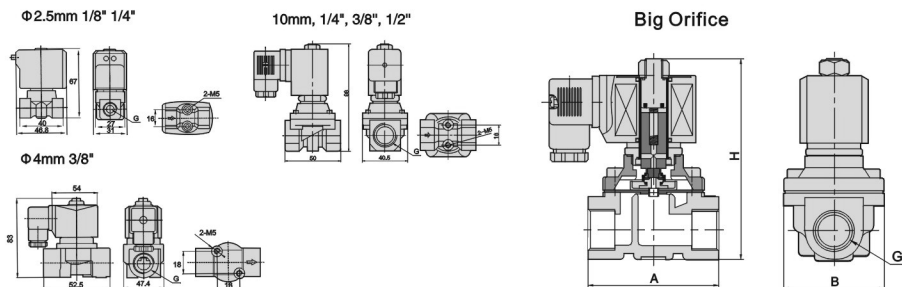
Ordering Code ZS Series 2/2 Solenoid Valve (Normal Close)

ZS	--	06	--	[]	--	3L	--	S2	--	H
ZS series		Port Size		Seal material		Orifice(mm)		Valve Body		Control Style
		06:G1/8" 08:G1/4" 10:G3/8" 15:G1/2" 20:G3/4" 25:G1" 35:G1-1/4" 40:G1-1/2" 50:G2" F:Flange		Blank: NBR V: VITON E: EPDM G: Silicon rubber (Optional for the orifice smaller than Φ25mm)		2.5L: 2.5 3L: 3.0 4L: 4.0 5L: 5.0 6L: 6.0 7.5L: 7.5 10L: 10.0 16L: 16.0 20L: 20.0 25L: 25.0 32L: 32.0 40L: 40.0 50L: 50.0		Blank: Brass S1: SS316 S2: SS304		Blank: Normal Close H: Normal Open
										} Cancel If Same With Port Size

Products Features:

- Normal close/Normal open, available body: brass, SS304, SS316
- Multiple seals are available for different medium
- Wide size range from 1/8" to 2" , with both thread and flange connection
- Diaphragm pilot solenoid valve, with lower working pressure (10mm is special)

Main Dimensions



Specifications

Port Size (G)	Orifice (mm)	Value	Pressure Difference(Bar)						Max. Temperature (°C)	Power		Model 220VAC		Main Dimension Length x Width x Height AxBxH(mm)	
			Max. Working Pressure							AC 220	DC 24V	Brass	Stainless Steel 304		
			Min. Pressure	Air, Gas		Water, Hot water, Liquid		Light oil ≤20CST							
			AC	DC	AC	DC	AC	DC							
3/8"	4.0	0.6	0	5	3	5	3	3	3	80	57	32	AS10-4LH	AS10-4LS2H	52.5 x 32.5 x 115
	4.0	0.6	0	5	3	5	3			120	57	32	AS10E-4LH	AS10E-4LS2H	52.5 x 32.5 x 115
	4.0	0.6	0	5	3	5	3	3	3	120	57	32	AS10V-4LH	AS10V-4LS2H	52.5 x 32.5 x 115
	16	4.8	0	5	3	3	5	3	3	80	57	32	AS10-16LH	AS10-16LS2H	69 x 57 x 135
	16	4.8	0	5	3	3	5			120	57	32	AS10E-16LH	AS10E-16LS2H	69 x 57 x 135
1/2"	16	4.8	0	5	3	5	3	3	3	80	57	32	ZS15-16LH	ZS15-16LS2H	69 x 57 x 135
	16	4.8	0	5	3	5	3			120	57	32	ZS15E-16LH	ZS15E-16LS2H	69 x 57 x 135
	16	4.8	0	5	3	5	3	3	3	120	57	32	ZS15V-16LH	ZS15V-16LS2H	69 x 57 x 135
3/4"	20	7.6	0	5	3	5	3	3	3	80	57.2	32	ZS-20H	ZS-20S2H	73 x 57 x 142
	20	7.6	0	5	3	5	3			120	57.2	32	ZS-20EH	ZS-20ES2H	73 x 57 x 142
	20	7.6	0	5	3	5	3	3	3	120	57.2	32	ZS-20VH	ZS-20VS2H	73 x 57 x 142
1"	25	12	0	5	3	5	3	3	3	80	57.2	32	ZS-25H	ZS-25S2H	99 x 77.5 x 150
	25	12	0	5	3	5	3			120	57.2	32	ZS-25EH	ZS-25ES2H	99 x 77.5 x 150
	25	12	0	5	3	5	3	3	3	120	57.2	32	ZS-25VH	ZS-25VS2H	99 x 77.5 x 150
1-1/4"	32	24	0	5	3	5	3	3	3	80	70	40	ZS35-32LH	ZS35-32LS2H	112 x 86.5 x 180
	32	24	0	5	3	5	3			120	70	40	ZS35E-32LH	ZS35E-32LS2H	112 x 86.5 x 180
	32	24	0	5	3	5	3	3	3	120	70	40	ZS35V-32LH	ZS35V-32LS2H	112 x 86.5 x 180
1-1/2"	40	29	0	5	3	5	3	3	3	80	70	40	ZS-40H	ZS-40S2H	123 x 94 x 190
	40	29	0	5	3	5	3			120	70	40	ZS-40EH	ZS-40ES2H	123 x 94 x 190
	40	29	0	5	3	5	3	3	3	120	70	40	ZS-40VH	ZS-40VS2H	123 x 94 x 190
2"	50	48	0	5	3	5	3	3	3	80	70	40	ZS-50H	ZS-50S2H	168 x 123 x 216
	50	48	0	5	3	5	3			120	70	40	ZS-50EH	ZS-50ES2H	168 x 123 x 216
	50	48	0	5	3	5	3	3	3	120	70	40	ZS-50VH	ZS-50VS2H	168 x 123 x 216
Flange connection	25	12	0	5	3	5	3	3	3	80	57	32	---	ZSF-25LS2H	140 x 115 x 180
	25	12	0	5	3	5	3			120	57	32	---	ZSFE-25LS2H	140 x 115 x 180
	25	12	0	5	3	5	3	3	3	120	57	32	---	ZSFV-25LS2H	140 x 115 x 180
	32	24	0	5	3	5	3	3	3	80	70	40	---	ZSF-32LS2H	152 x 135 x 235
	32	24	0	5	3	5	3			120	70	40	---	ZSFE-32LS2H	152 x 135 x 235
	32	24	0	5	3	5	3	3	3	120	70	40	---	ZSFV-32LS2H	152 x 135 x 235
	40	29	0	5	3	5	3	3	3	80	70	40	---	ZSF-40LS2H	152 x 145 x 240
	40	29	0	5	3	5	3			120	70	40	---	ZSFE-40LS2H	152 x 145 x 240
	40	29	0	5	3	5	3	3	3	120	70	40	---	ZSFV-40LS2H	152 x 145 x 240
	50	48	0	5	3	5	3	3	3	80	70	40	---	ZSF-50LS2H	195 x 160 x 255
	50	48	0	5	3	5	3			120	70	40	---	ZSFE-50LS2H	195 x 160 x 255
	50	48	0	5	3	5	3	3	3	120	70	40	---	ZSFV-50LS2H	195 x 160 x 255

PU220 Series Solenoid Valve



Ordering Code PU220 Series Solenoid Valve (2 Position 2 Port)

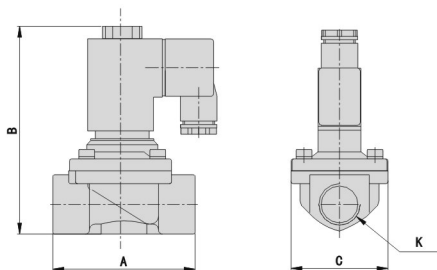
PU	220	-	01	-	□	-	T	-	AC110V
Type Code	Acting Type		Joint Size		Mounting Type		Coil Type		Standard Voltage
PU:2 Position 2 Port Solenoid valve	220:Direct Type		01:G1/8" 02:G1/4" 03:G3/8" 04:G1/2" 06:G3/4" 08:G1"		Blank:Tube Joint Type F:With Flange		Blank:standard Coil T:coil With Timer		DC12V DC24V AC24V 50/60HZ AC110V 50/60HZ AC220V 50/60HZ

Specifications

Model	PU220-01	PU220-02	PU220-03	PU220-04	PU220-06	PU220-08
Working Medium	Air、Water、Oil					
Acting Type	Direct Acting					
Type	Normal Close					
Orifice	1.5mm	2.3mm	8.0mm	13.0mm	20.0mm	25.0mm
CV Value	0.10m ³ /h	0.18 m ³ /h	1.00 m ³ /h	4.00 m ³ /h	8.60m ³ /h	11.00m ³ /h
Joint Size	G1/8"	G1/4"	G3/8"	G1/2"	G3/4"	G1"
Working Pressure	0~0.7Mpa					
Max Pressure	1.05Mpa					
Diaphragm	NBR、VITON、EPDM					
Working Temperature	-10℃~90℃					
Body Material	Brass					

Main Specifications

Model	K	A	B	C
PU220-01	G1/8"	22.0	72.0	22.0
PU220-02	G1/4"	22.0	72.0	25.4
PU220-03	G3/8"	55.0	79.5	30.0
PU220-04	G1/2"	66.5	101	48.0
PU220-06	G3/4"	71.0	107	48.0
PU220-08	G1"	96.0	120	70.0



PU225 Series Solenoid Valve



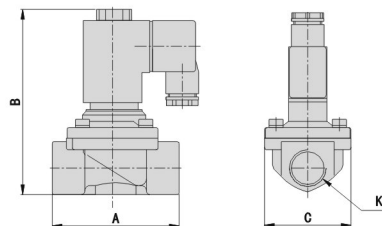
Ordering Code PU225 Series Solenoid Valve (2 Position 2 Port)

PU	225	-	03	-	□	-	T	-	AC110V
Type Code	Acting Type		Joint Size		Mounting Type		Coil Type		Standard Voltage
PU:2 Position 2 Port Solenoid valve SPU:Stainless steel 2/2 solenoid Valve	225:Pilot Type		03:G3/8" 04:G1/2" 06:G3/4" 08:G1" 12:G1/4" 14:G1/2" 20:G2"		Blank:Tube Joint Type F:With Flange		Blank:Standard Coil T:With timer Coil		DC12V DC24V AC24V 50/60HZ AC110V 50/60HZ AC220V 50/60HZ

Specifications

Model	PU225-03	PU225-04	PU225-06	PU225-08	PU225-12	PU225-14	PU225-20
	SPU225-03	SPU225-04	SPU225-06	SPU225-08	SPU225-12	SPU225-14	SPU225-20
Working Medium	Air、Water、Oil						
Acting Type	Pilot Type						
Type	Normal Close						
Orifice	13mm	13mm	25mm	25mm	38mm	38mm	50mm
CV Value	4.50m ³ /h	4.50 m ³ /h	12.00 m ³ /h	12.00 m ³ /h	22.00m ³ /h	30.00m ³ /h	48.00m ³ /h
Joint Size	G3/8"	G1/2"	G3/4"	G1"	G1 1/4"	G1 1/2"	G2"
Working Pressure	0.5~1.0Mpa						
Max Pressure	1.5Mpa						
Diaphragm	NBR、VITON、EPDM						
Working Temperature	-5℃~80℃						
Body Material	Brass、Stainless Steel						

Main Specifications



Model	K	K	K	K
PU225-03 SPU225-03	G3/8"	66.5	106.5	48.0
PU225-04 SPU225-04	G1/2"	66.5	106.5	48.0
PU225-06 SPU225-06	G3/4"	96.0	126.0	70.0
PU225-08 SPU225-08	G1"	96.0	126.0	70.0
PU225-12 SPU225-12	G1 1/4"	131.0	145.5	96.0
PU225-14 SPU225-14	G1 1/2"	131.0	145.5	96.0
PU225-20	G2"	160.0	160.5	112.0

Special Valve For Water Fountain



Ordering Code

SLC
 Type Code
 SLC Series

1
 Orifice
 1:1/8 Joint Size 2.5mm Orifice
 2:1/4 Joint Size 2.5mm Orifice
 3:8mm Orifice
 3:9mm Orifice

Specifications

Model	SLC1	SLC2	SLC3	SLC4
Working Medium	Water			
Acting type	Direct Acting			
Type	2/2 (Normal Close)			
Orifice	2.5mm (3/32)		8mm	9mm
Joint Size	G1/8	G1/4	12	
Working Pressure	0~0.8Mpa		0~0.6Mpa	
Temperature	0~100°C			
Medium Temperature	-10~40°C			
Seal Material	EPDM		Silicon Rubber	
Body material	PP1/8 (Black) 1/4 (White) Nyoln66		PP	

Compact Solenoid Valve

GM22-1.2L



Condition	Normal Close
Joint Size	M5
Orifice	1.2mm
Working Pressure	0.15~0.8Mpa
Working Temperature	-5~80°C
Material	Nickle Plated brass
Seal Material	PTFE

Q22, Q23



Model	Q22XD-2L	Q22XD-3L	Q22XD-4L	Q22XD-5L	Q23XD-2L	Q23XD-3L	Q23XD-4L	Q23XD-5L
Conditio	NC, NO							
Joint Size	1/8 1/4							
Orifice	2, 3, 4, 5 mm							
Working Pressure	0.15~0.8Mpa							
Working temperature	-5~80°C							
Material	Brass							
Seals	NBR, VITON							

Electro-Magnetic Valve

Ordering Code

VPCF - 25 - AC220V
 Type Code
 VPCF Series

25
 Orifice
 25:25mm
 40:40mm
 50:50mm
 65:65mm
 76:76mm

AC220V
 Standard voltage
 AC220V
 DC24V



Specifications

Model	VPCF-25	VPCF-40	VPCF-50	VPCF-65	VPCF-76
Working Pressure	0.3-0.8Mpa				
Working Temperature	-10~55°C				
Relative Humidity	<85%				
Working Medium	Clean Air				
Voltage	AC110V/AC220V/DC24V				
Diaphragm Life	Over One Million Cycles				
Orifice	Φ25	Φ40	Φ50	Φ65	Φ76
Joint Size	G1"	G1-1/2"	G2"	G2-1/2"	G3"

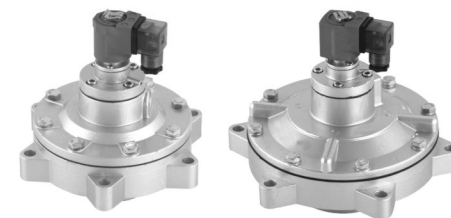
Submerged Electro-Magnetic Valve

Ordering Code

VPCYF - 50 - AC110V
 Type Code
 VPCYF Series

50
 Orifice
 50:50mm
 62:62mm
 76:76mm

AC110V
 Standard Voltage
 AC110V
 AC220V
 DC24V



Specifications

Model	VPCYF-50	VPCYF-62	VPCYF-76
Working Pressure	0.3-0.8Mpa		
Working Temperature	-5~55°C		
Relative Humidity	<85%		
Working Medium	Clean Air		
Voltage	AC110V/AC220V/DC24V		
Diaphragm Life	Over One Million Cycles		
Orifice	Φ50	Φ62	Φ76
Joint Size	Φ50	Φ80	Φ90